



REACH STACKER
DATASHEET METRIC

SUPER STACKER

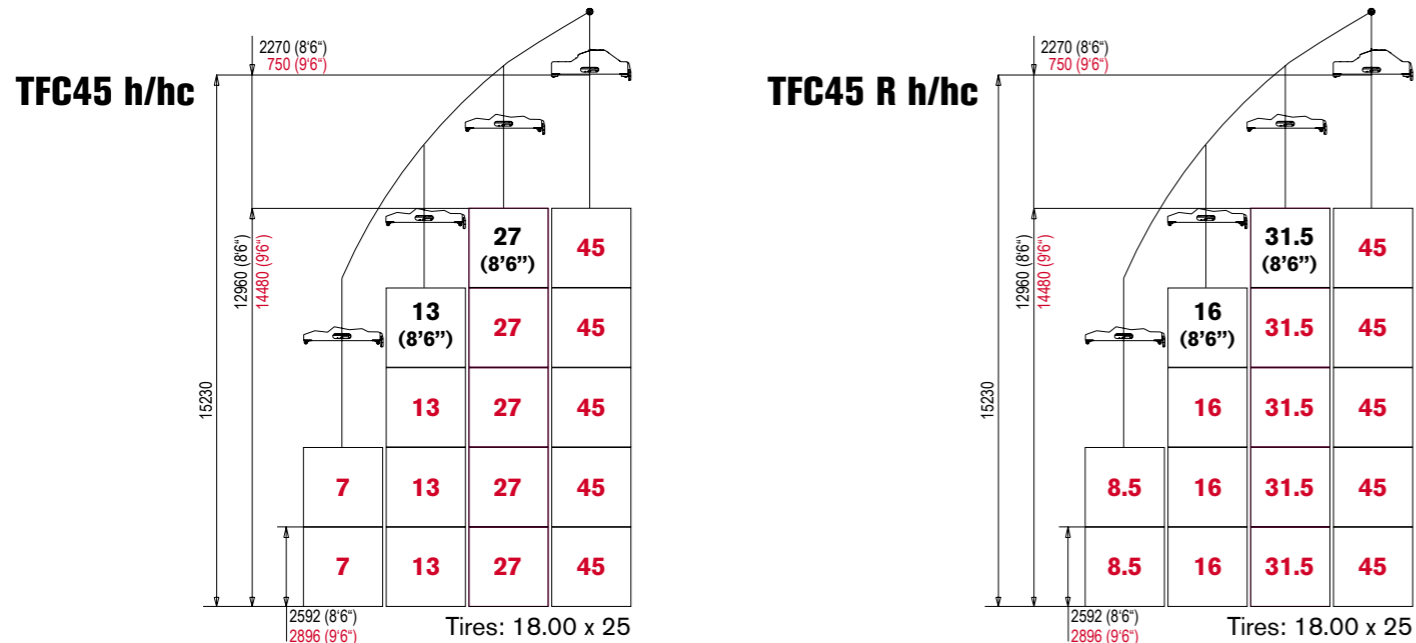


WORKS FOR YOU.™

TFC45 / TFC45 R



LOAD CHART COURBE DE CHARGE - TABLA DE CARGA - TABELA DE CARGA



WEIGHT WITH TOP-PICK SPREADER

| | No load (boom:25°) | | 30t (boom:45°) | | 45t (boom:45°) | | |
|---------|--------------------|-------|----------------|-------|----------------|-------|--------|
| TFC45 | F: | 36,0t | 68,3t | 68,6t | 98,3t | 86,7t | 113,3t |
| | R: | 32,3t | | 29,7t | | 26,6t | |
| TFC45 R | F: | 35,8t | 71,6t | 68,4t | 101,6t | 86,5t | 116,6t |
| | R: | 35,8t | | 33,2t | | 30,1t | |

MAX SPEED

MAX GRADEABILITY

| | No load | With 45t | Towing ability | | No load | | 45t full load | |
|---------|---------|----------|----------------|------------|---------------|------------|---------------|------------|
| | | | Cummins QSM11 | Scania DC9 | Cummins QSM11 | Scania DC9 | Cummins QSM11 | Scania DC9 |
| TFC45 | 25 km/h | 25 km/h | 28,9 t | 30,6 t | 42 % | 44,8 % | 24,8 % | 26,6 % |
| TFC45 R | | | | | 40 % | 42,7 % | 24,5 % | 26,2 % |

BOOM

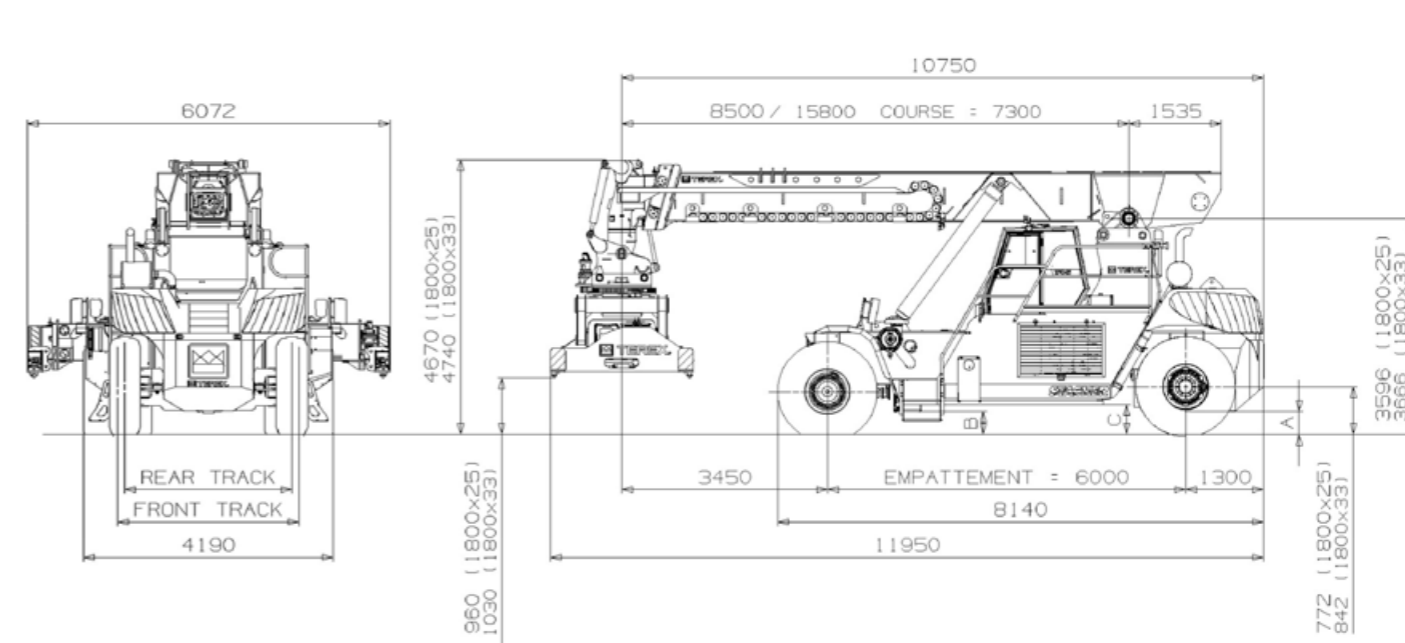
| | Telescoping out - no load | | Telescoping-out - 30T load | | Telescoping-in - no load | | Telescoping-in 30T load | |
|---------|---------------------------|----------|----------------------------|----------|--------------------------|----|-------------------------|----|
| | h | hc | h | hc | h | hc | h | hc |
| TFC45 | 23 sec.- | 18 sec.- | 23 sec. - | 18 sec.- | 16 sec. - | | 17 sec. - | |
| TFC45 R | 0,31 m/s | 0,40 m/s | 0,31 m/s | 0,40 m/s | 0,45 m/s | | 0,42 m/s | |

| | Hoisting up 0° to 60° | | | | Time to stack a container from 1st to 5th height | | | | Time to unstack a container from 5th to 1st height | |
|---------|-----------------------|---------|----------|---------|--|----------|----------|----------|--|-----------|
| | No load | | 30T load | | No load | | 30T load | | No load | 30T load |
| | h | hc | h | hc | h | hc | h | hc | | |
| TFC45 | 23 sec. | 16 sec. | 23 sec. | 18 sec. | 45 sec.- | 35 sec.- | 60 sec.- | 45 sec.- | 28 sec. - | 27 sec. - |
| TFC45 R | | | | | 0,34 m/s | 0,40 m/s | 0,25 m/s | 0,26 m/s | 0,55 m/s | 0,50 m/s |

TFC45 / TFC45 R

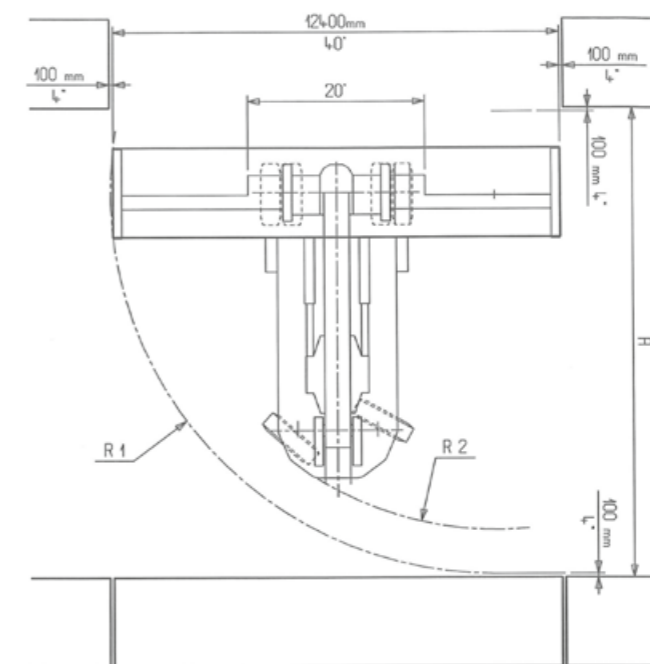


DIMENSIONS & TURNING RADIUS DIMENSIONS - DIMENSIONES - DIMENSÕES



| WHEEL | | |
|-------------|------------|------------|
| | 18.00 x 25 | 18.00 x 33 |
| FRONT TRACK | 3033 mm | 3033 mm |
| REAR TRACK | 2770 mm | 2770 mm |

| GROUND CLEARANCE | | |
|------------------|------------|------------|
| | 18.00 x 25 | 18.00 x 33 |
| A | 320 mm | 390 mm |
| B | 420 mm | 490 mm |
| C | 500 mm | 570 mm |

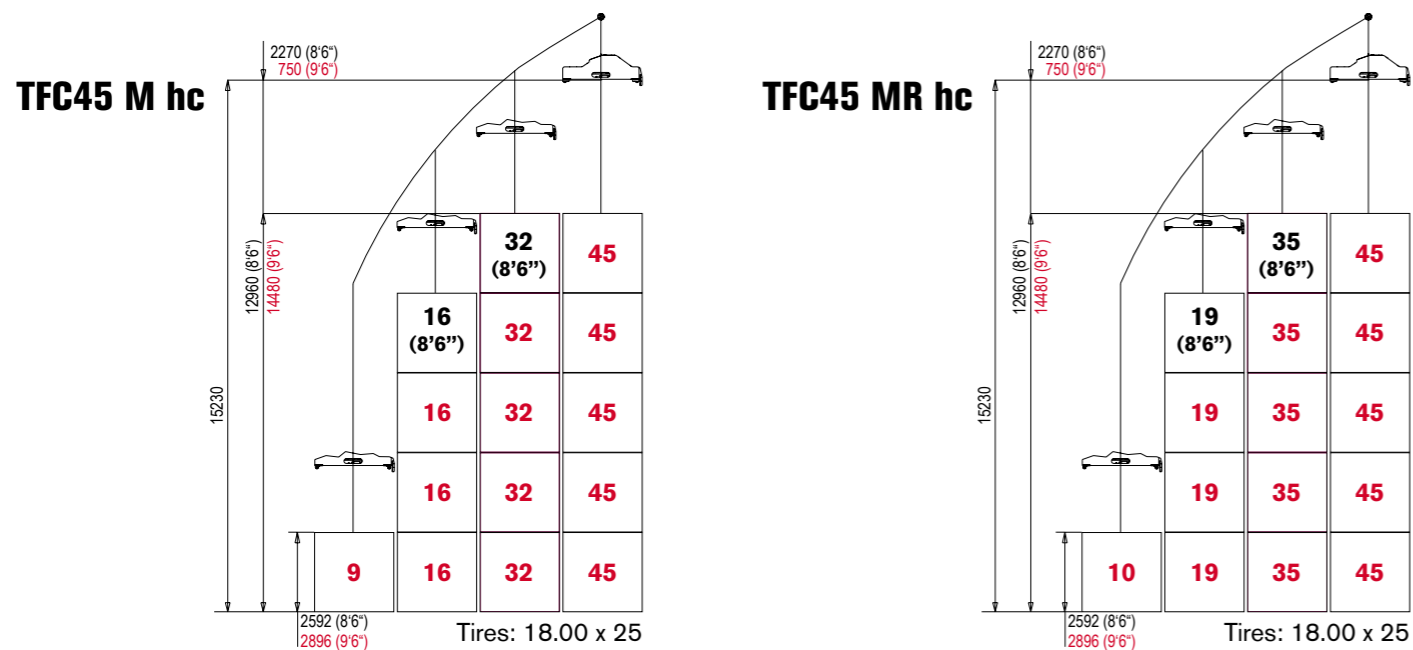


| | 40' | | | 20' | | |
|-----------------|----------|----------|---------|----------|---------|---------|
| | A | R1 | R2 | A | R1 | R2 |
| TFC45 / TFC45 R | 12830 mm | 10420 mm | 8700 mm | 10210 mm | 7400 mm | 8700 mm |

TFC45 M / TFC45 MR



LOAD CHART COURBE DE CHARGE - TABLA DE CARGA - TABELA DE CARGA



WEIGHT WITH TOP-PICK SPREADER

| | | No load (boom:25°) | | 30t (boom:45°) | | 45t (boom:45°) | |
|-----------------|----|--------------------|-------|----------------|--------|----------------|--------|
| | | F: | R: | F: | R: | F: | R: |
| TFC45 M | F: | 34,3t | 68,6t | 66,2t | 98,6t | 83,6t | 113,3t |
| | R: | 34,3t | | 32,4t | | 30,0t | |
| TFC45 MR | F: | 34,2t | 72,0t | 66,1t | 102,0t | 83,5t | 117,0t |
| | R: | 37,8t | | 35,9t | | 33,5t | |

MAX SPEED

MAX GRADEABILITY

| | No load | With 45t | Towing ability | | No load | | 45t full load | |
|-----------------|---------|----------|----------------|------------|---------------|------------|---------------|------------|
| | | | Cummins QSM11 | Scania DC9 | Cummins QSM11 | Scania DC9 | Cummins QSM11 | Scania DC9 |
| TFC45 M | 25 km/h | 25 km/h | 28,9 t | 30,6 t | 42 % | 44,8 % | 24,8 % | 26,6 % |
| TFC45 MR | | | | | 40 % | 42,7 % | 24,5 % | 26,2 % |

BOOM

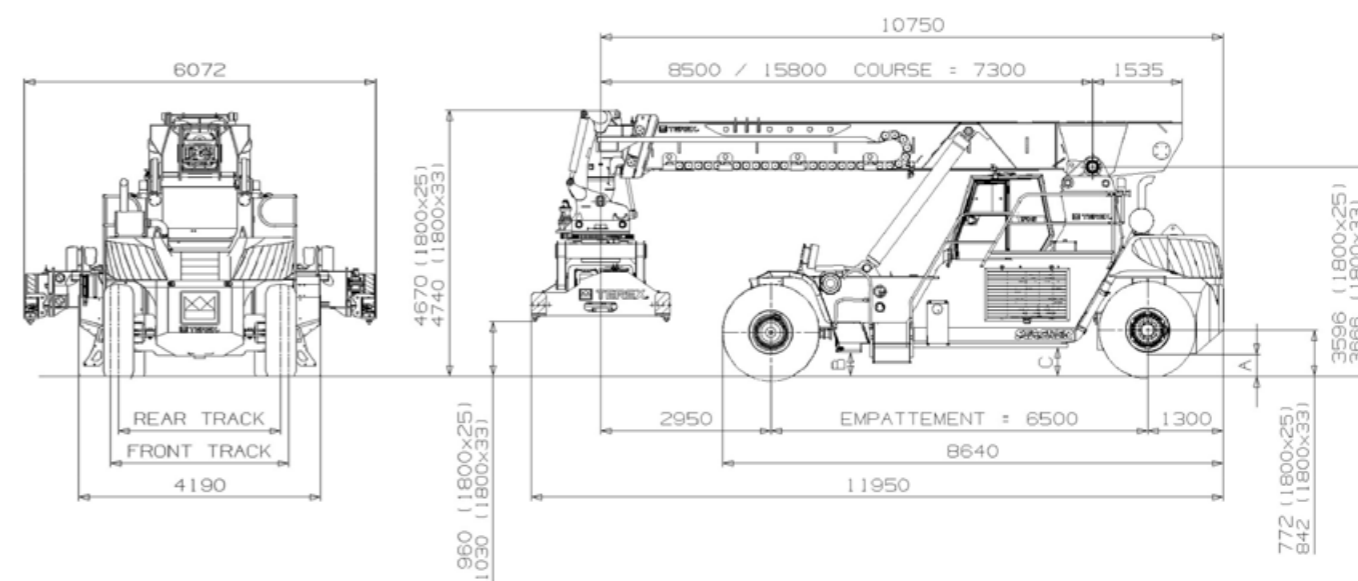
| | Telescoping out - no load | | Telescoping-out - 30T load | | Telescoping-in - no load | | Telescoping-in 30T load | |
|-----------------|---------------------------|----------|----------------------------|----------|--------------------------|----------|-------------------------|----------|
| | Time | Speed | Time | Speed | Time | Speed | Time | Speed |
| TFC45M | 18 sec. | 0,40 m/s | 18 sec. | 0,40 m/s | 16 sec. | 0,45 m/s | 17 sec. | 0,42 m/s |
| TFC45 MR | | | | | | | | |

| | Hoisting up 0° to 60° | | Time to stack a container from 1st to 5th height | | Time to unstack a container from 5th to 1st height | |
|-----------------|-----------------------|----------|--|----------------------|--|-----------------------|
| | No load | 30T load | No load | 30T load | No load | 30T load |
| TFC45M | 16 sec. | 18 sec. | 35 sec.- 0,40 m/s | 45 sec.- 0,26 m/s | 25 sec. - 0,55 m/s | 23 sec. - 0,50 m/s |
| TFC45 MR | | | | | | |

TFC45 M / TFC45 MR

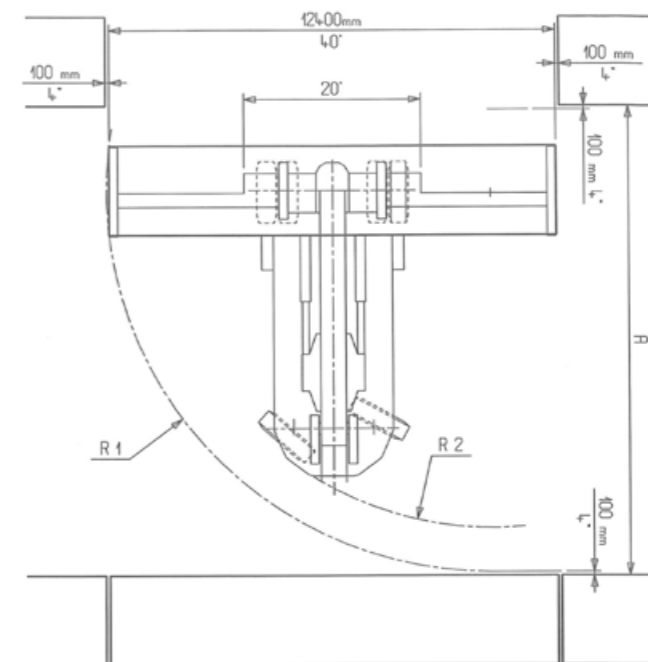


DIMENSIONS & TURNING RADIUS DIMENSIONS - DIMENSIONES - DIMENSÕES



| | WHEEL | |
|-------------|------------|------------|
| | 18.00 x 25 | 18.00 x 33 |
| FRONT TRACK | 3033 mm | 3033 mm |
| REAR TRACK | 2770 mm | 2770 mm |

| | GROUND CLEARANCE | |
|---|------------------|------------|
| | 18.00 x 25 | 18.00 x 33 |
| A | 320 mm | 390 mm |
| B | 420 mm | 490 mm |
| C | 500 mm | 570 mm |



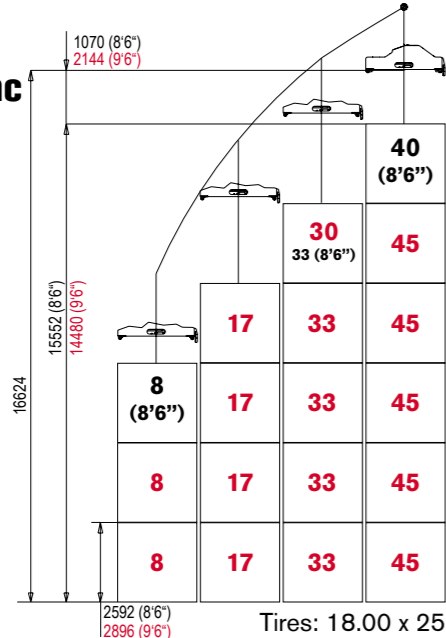
| | 40' | | | 20' | | |
|--------------------------|----------|----------|---------|----------|---------|---------|
| | A | R1 | R2 | A | R1 | R2 |
| TFC45M / TFC45 MR | 12830 mm | 10420 mm | 9150 mm | 10640 mm | 7400 mm | 9150 mm |

TFC46 M dry / TFC46 M / TFC46 MX / TFC46 MS / TFC46 MSX

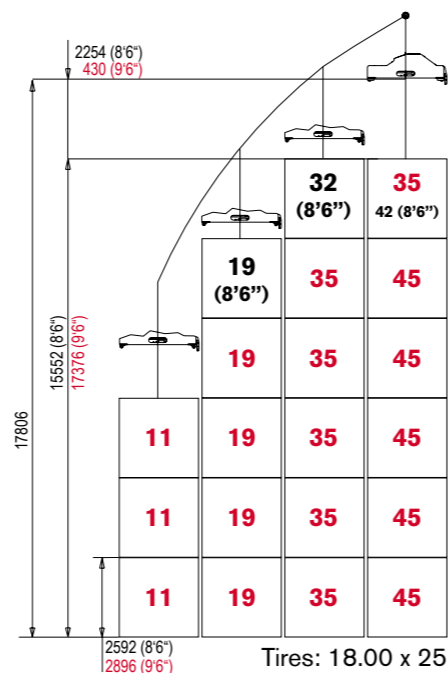


LOAD CHART COURBE DE CHARGE - TABLA DE CARGA - TABELA DE CARGA

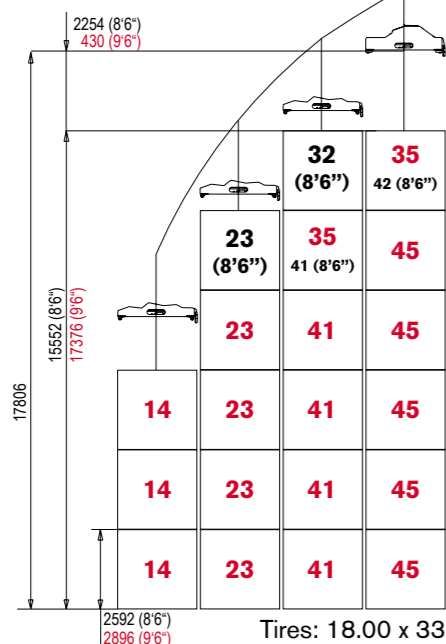
TFC46 M dry hc



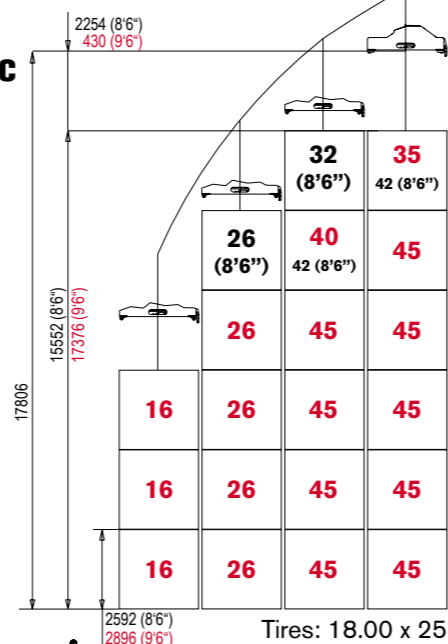
TFC46 M hc



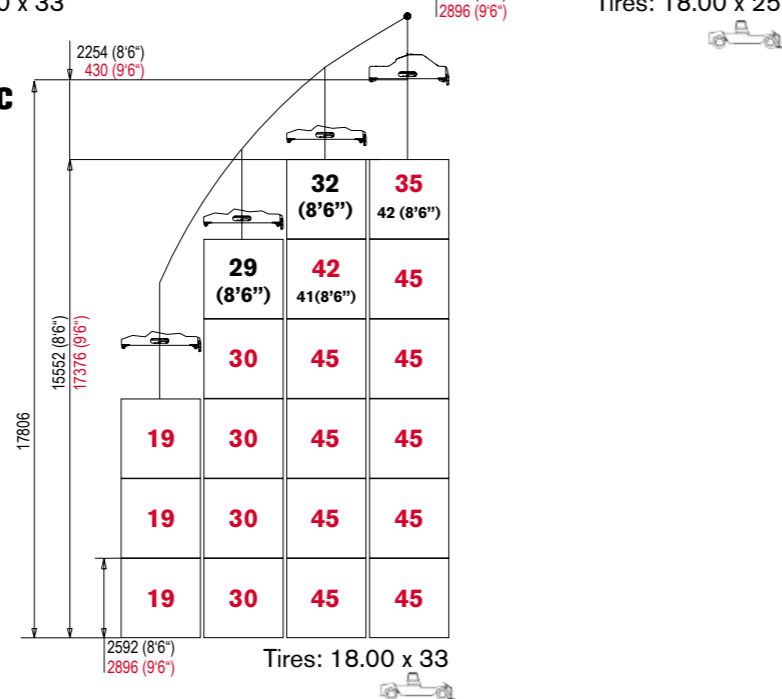
TFC46 MX hc



TFC46 MS hc



TFC46 MSX hc



TFC46 M dry / TFC46 M / TFC46 MX / TFC46 MS / TFC46 MSX



WEIGHT WITH TOP-PICK SPREADER

| | | No load (boom:25°) | | 30t (boom:45°) | | 45t (boom:45°) | |
|-------------|----|--------------------|-------|----------------|--------|----------------|--------|
| TFC46 M dry | F: | 33,9t | 70,0t | 66,8t | 100,0t | 84,2t | 115,0t |
| | R: | 36,1t | 73,7t | 33,2t | 103,7t | 30,8t | 118,7t |
| TFC46 M | F: | 37,2t | 73,7t | 68,3t | 103,7t | 86,2t | 118,7t |
| | R: | 36,5t | 73,7t | 35,4t | 103,7t | 32,5t | 118,7t |
| TFC46 MX | F: | 38,1t | 74,5t | 69,1t | 104,5t | 87,0t | 119,5t |
| | R: | 36,4t | 74,5t | 35,4t | 104,5t | 32,5t | 119,5t |
| TFC46 MS | F: | 34,1t | 78,9t | 67,0t | 108,9t | 93,8t | 123,9t |
| | R: | 44,8t | 78,9t | 41,9t | 108,9t | 30,1t | 123,9t |
| TFC46 MSX | F: | 34,5t | 79,5t | 67,3t | 109,5t | 84,7t | 124,5t |
| | R: | 45,0t | 79,5t | 42,2t | 109,5t | 39,8t | 124,5t |

MAX SPEED

MAX GRADEABILITY

| | No load | With 45t | Towing ability | | No load | | 45t full load | |
|-------------|---------|----------|----------------|------------|---------------|------------|---------------|------------|
| | | | Cummins QSM11 | Scania DC9 | Cummins QSM11 | Scania DC9 | Cummins QSM11 | Scania DC9 |
| TFC46 M dry | | | | | 40 % | 42,7 % | 24,8 % | 26,6 % |
| TFC46 M | | | | | 39 % | 41 % | 24,5 % | 26,2 % |
| TFC46 MX | 25 km/h | 25 km/h | 28,9 t | 30,6 t | 36,5% | 38 % | 22,3 % | 24,5 % |
| TFC46 MS | | | | | 38,5 % | 40,5 % | 24,2 % | 25,5 % |
| TFC46 MSX | | | | | 36 % | 37,5 % | 23 % | 25,2 % |

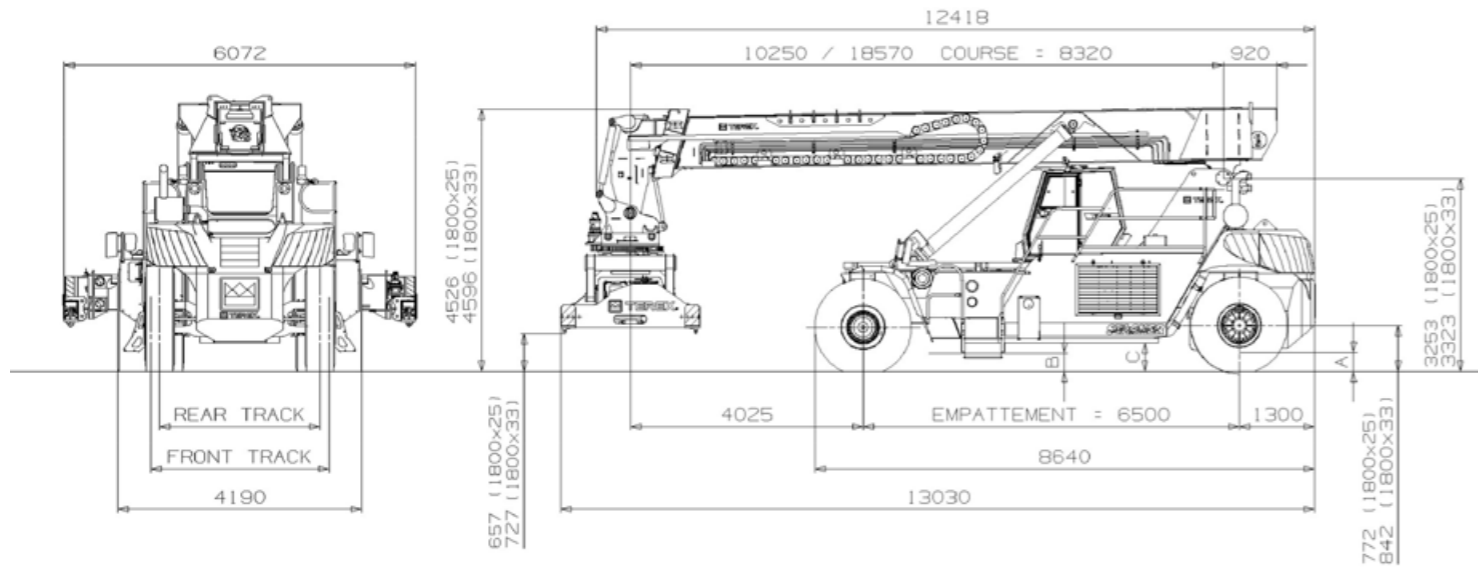
BOOM

| | Telescoping out - no load | Telescoping-out - 30T load | Telescoping-in - no load | Telescoping-in 30T load | | |
|-------------|---------------------------|----------------------------|---|-------------------------|---|-----------------------|
| TFC46 M dry | | | | | | |
| TFC46 M | | | | | | |
| TFC46 MX | 27 sec.- 0,30 m/s | 28 sec.- 0,29m/s | 25 sec.- 0,33 m/s | 26 sec.- 0,22 m/s | | |
| TFC46 MS | | | | | | |
| TFC46 MSX | | | | | | |
| | Hoisting up 0° to 60° | | Time to stack a container from 1st to 6th height (simultaneous functions) | | Time to unstack a container from 6th to 1st height (simultaneous functions) | |
| | No load | 30T load | No load | 30T load | No load | 30T load |
| TFC46 M dry | | | | | | |
| TFC46 M | | | | | | |
| TFC46 MX | 22 sec. | 22 sec. | 42 sec.- 0,48 m/s | 54 sec.- 0,31 m/s | 30 sec. - 0,55 m/s | 28 sec. - 0,60 m/s |
| TFC46 MS | | | | | | |
| TFC46 MSX | | | | | | |

TFC46 M dry / TFC46 M / TFC46 MX / TFC46 MS / TFC46 MSX

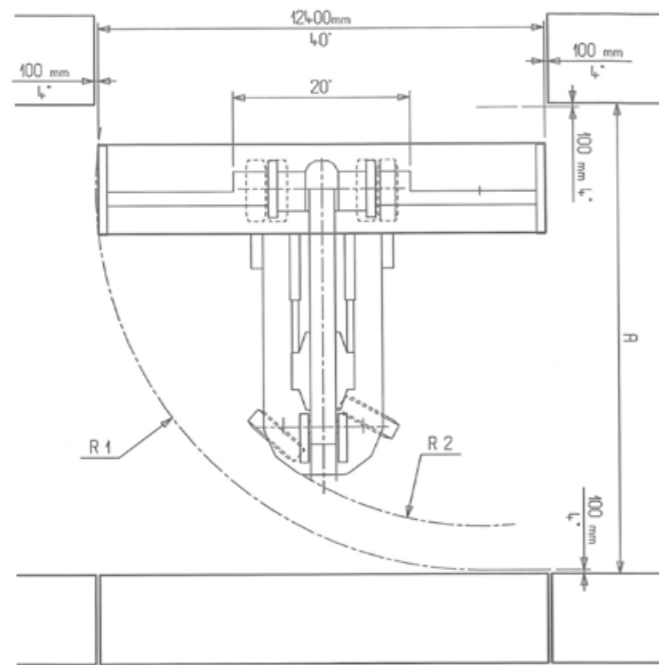


DIMENSIONS & TURNING RADIUS DIMENSIONS - DIMENSIONES - DIMENSÕES



| WHEEL | | |
|-------------|------------|------------|
| | 18.00 x 25 | 18.00 x 33 |
| FRONT TRACK | 3033 mm | 3033 mm |
| REAR TRACK | 2770 mm | 2770 mm |

| GROUND CLEARANCE | | |
|------------------|------------|------------|
| | 18.00 x 25 | 18.00 x 33 |
| A | 320 mm | 390 mm |
| B | 420 mm | 490 mm |
| C | 500 mm | 570 mm |

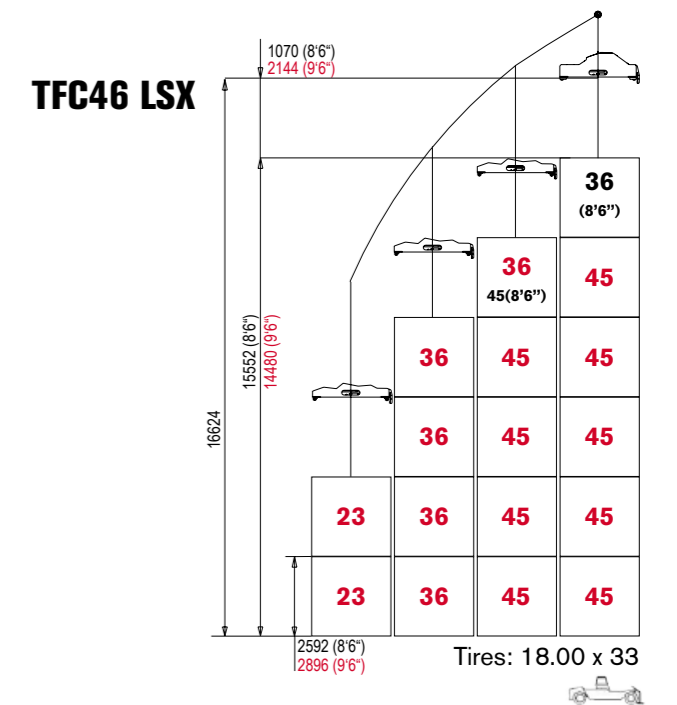
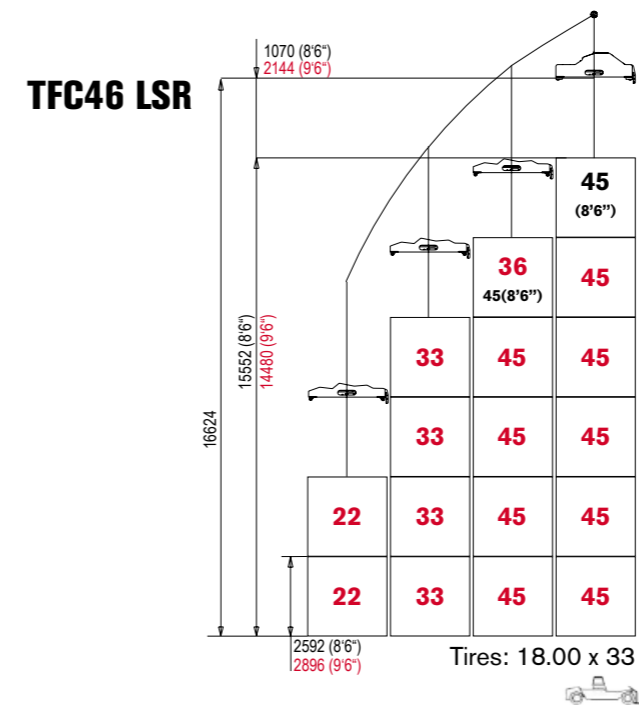
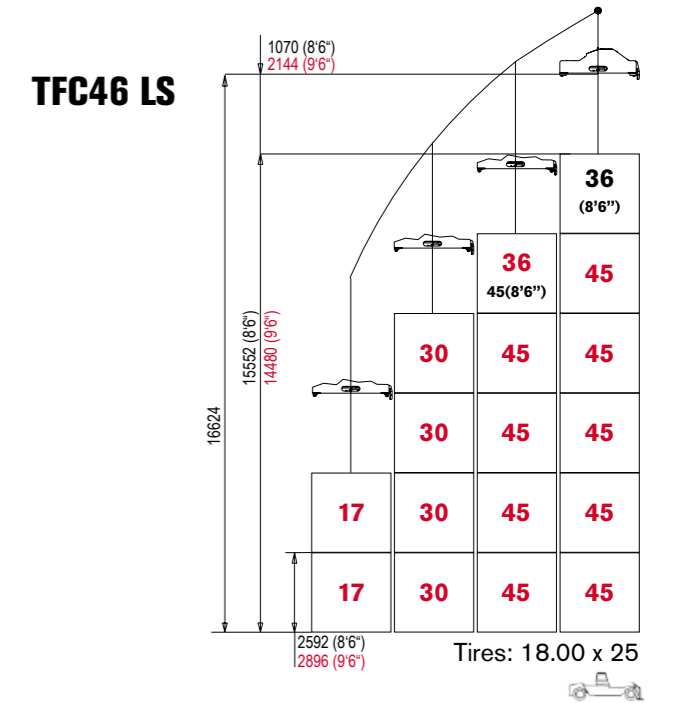
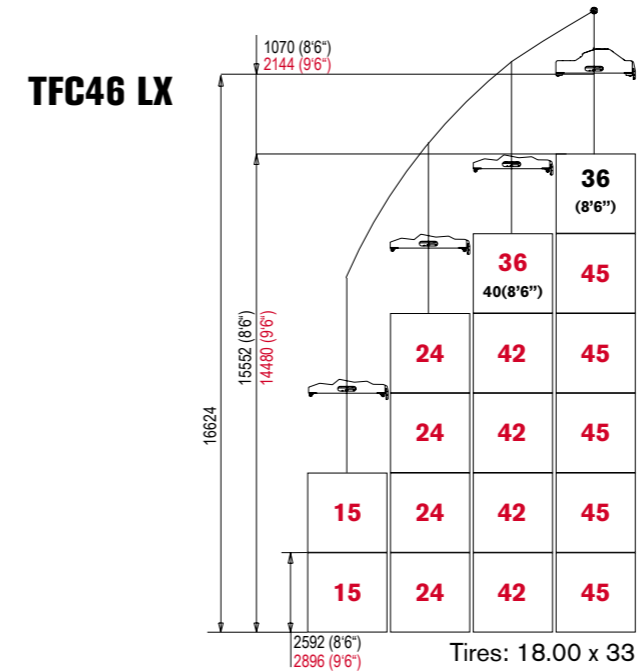


| | 40' | | | 20' | | |
|---|----------|----------|---------|----------|---------|---------|
| | A | R1 | R2 | A | R1 | R2 |
| TFC46 M dry / TFC46 M / TFC46 MX / TFC46 MS / TFC46 MSX | 12830 mm | 10420 mm | 9150 mm | 10640 mm | 7400 mm | 9150 mm |

TFC46 LX / TFC46 LS / TFC46 LSR / TFC46 LSX



LOAD CHART COURBE DE CHARGE - TABLA DE CARGA - TABELA DE CARGA



TFC46 LX / TFC46 LS / TFC46 LSR / TFC46 LSX



WEIGHT WITH TOP-PICK SPREADER

| | | No load (boom:25°) | | 30t (boom:45°) | | 45t (boom:45°) | |
|-----------|----|--------------------|-------|----------------|--------|----------------|--------|
| | | F: | R: | F: | R: | F: | R: |
| TFC46 LX | F: | 36,4t | 81,7t | 65,8t | 111,7t | 82,6t | 126,7t |
| | R: | 45,3t | | 45,9t | | 44,1t | |
| TFC46 LS | F: | 39,0t | 73,5t | 68,4t | 103,5t | 85,2t | 118,5t |
| | R: | 34,5t | | 35,1t | | 33,3t | |
| TFC46 LSR | F: | 38,8t | 77,8t | 68,2t | 107,9t | 85,0t | 122,8t |
| | R: | 39,0t | | 39,6t | | 37,8t | |
| TFC46 LSX | F: | 38,7t | 80,5t | 68,1t | 110,5t | 84,9t | 125,5t |
| | R: | 41,8t | | 42,4t | | 40,6t | |

MAX SPEED

MAX GRADEABILITY

| | No load | | Towing ability | | No load | | 45t full load | |
|-----------|---------|---------|----------------|------------|---------------|------------|---------------|------------|
| | 25 km/h | 25 km/h | Cummins QSM11 | Scania DC9 | Cummins QSM11 | Scania DC9 | Cummins QSM11 | Scania DC9 |
| TFC46 LX | | | | | 35 % | 37 % | 22 % | 24,2 % |
| TFC46 LS | | | | | 39 % | 41 % | 24,5 % | 24,5 % |
| TFC46 LSR | 25 km/h | 25 km/h | 28,9 t | 30,6 t | 36,5 % | 38 % | 24,2 % | 24,8 % |
| TFC46 LSX | | | | | 36 % | 37,5 % | 22,5 % | 25 % |

BOOM

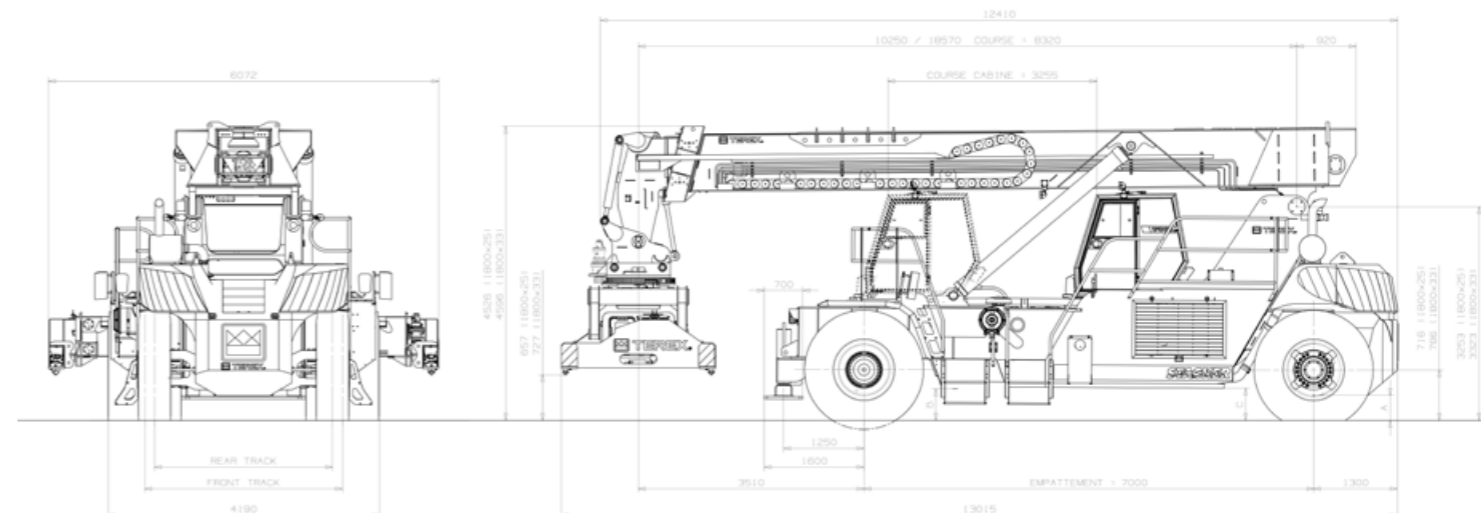
| | Telescoping out – no load | | Telescoping-out - 30T load | | Telescoping-in - no load | | Telescoping-in 30T load | |
|-----------|---------------------------|--|----------------------------|--|--------------------------|--|-------------------------|--|
| | 27 sec.- 0,30 m/s | | 28 sec.- 0,29 m/s | | 25 sec. - 0,33 m/s | | 26 sec. - 0,32 m/s | |
| TFC46 LX | | | | | | | | |
| TFC46 LS | | | | | | | | |
| TFC46 LSR | | | | | | | | |
| TFC46 LSX | | | | | | | | |

| | Hoisting up 0° to 60° | | Time to stack a container from 1st to 6th height | | Time to unstack a container from 6th to 1st height | |
|-----------|-----------------------|----------|--|----------------------|--|-----------------------|
| | No load | 30T load | No load | 30T load | No load | 30T load |
| TFC46 LX | | | | | | |
| TFC46 LS | | | | | | |
| TFC46 LSR | 24 sec. | 26 sec. | 45 sec.- 0,46 m/s | 60 sec.- 0,28 m/s | 32 sec. - 0,50 m/s | 30 sec. - 0,58 m/s |
| TFC46 LSX | | | | | | |

TFC46 LX / TFC46 LS / TFC46 LSR / TFC46 LSX

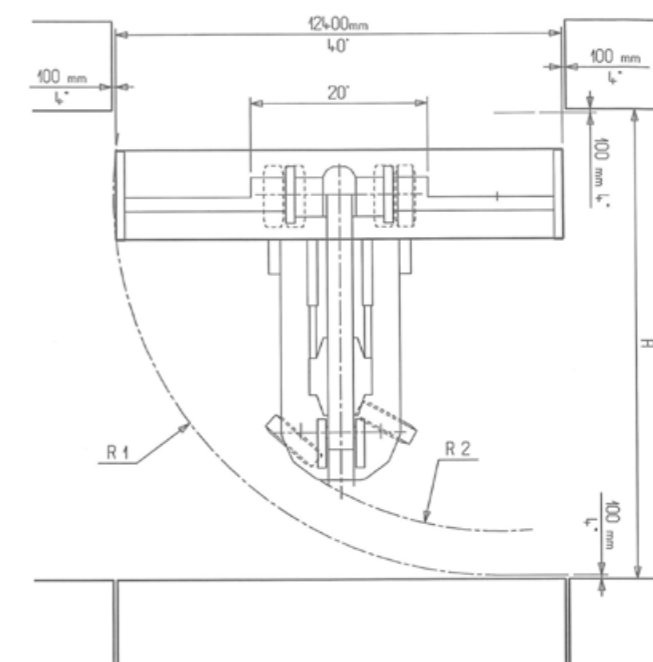


DIMENSIONS & TURNING RADIUS



| WHEEL | | |
|-------------|------------|------------|
| | 18.00 x 25 | 18.00 x 33 |
| FRONT TRACK | 3033 mm | 3033 mm |
| REAR TRACK | 2770 mm | 2770 mm |

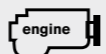
| GROUND CLEARANCE | | |
|------------------|------------|------------|
| | 18.00 x 25 | 18.00 x 33 |
| A | 320 mm | 390 mm |
| B | 420 mm | 490 mm |
| C | 500 mm | 570 mm |





| | 40' | | | 20' | | |
|--|----------|----------|---------|----------|---------|---------|
| | A | R1 | R2 | A | R1 | R2 |
| TFC46 LX / TFC46 LS / TFC46 LSR / TFC46 LSX | 12830 mm | 10520 mm | 9600 mm | 11020 mm | 9600 mm | 7500 mm |


COMMON TECHNICAL SPECIFICATIONS





| ENGINE  | | |
|---|----------------------------------|--|
| Make | Cummins QSM11 | Scania DC9 |
| Exhaust gas regulation | EC: euromot 3a / EPA: Tier3 | EC : euromot 3b / EPA : Tier4i |
| Cooling system | Water cooled | |
| Fuel | Diesel | |
| Type | Inline 6 cylinders, turbocharged | Inline 5 cylinders, Turbocharged |
| Power | Maxi: 320 HP (239 kW) @1800rpm | Maxi: 350 HP (257 kW) from 1500 to 2100rpm |
| Max. Torque | 1478 Nm (1000 to 1400rpm) | 1790 Nm (@ 1200rpm) |
| Displacement | 10,82 L | 9,3 L |
| Batteries | 2X12 V – 200 Ah | |

| TRANSMISSION  | |
|---|---|
| Make | Dana / TE 27418 |
| Torque converter | Hydraulic torque converter – R=2,292 |
| Transmission type | Automatic power shift control / APC 214 |
| Gears FWD / REV | 4/4 |
| Gears ratio FWD and REV | 5,07 / 2,42 / 1,38 / 0,78 |

| AXLES  | |
|--|--|
| Front axle: type | Drive axle – Double reduction with wet disk brakes |
| Reduction | 22,6 or 25,40 |
| Rear axle | Heavy duty oscillating axle |


| TYRES  | |
|--|--|
| Dimensions | Tubeless 18.00 x 25 or 18.00 x 33 or depending of models |
| Pressure (1 bar = 1 kg/cm ²) | 10 bars |

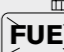
| STEERING  | |
|---|---|
| Description | Hydrostatic rear steering with double acting cylinder |


| BRAKES  | |
|---|--|
| Type | Wet disk brakes on front axle by independent hydraulic circuit |
| Control | Hydraulic system with SOS accumulator |
| Parking brake | Spring release disk on the front axle |


COMMON TECHNICAL SPECIFICATIONS




| HYDRAULIC  | |
|---|--|
| Main system | Power regulated Load Sensing |
| Main pump | Two section variable displacement – piston pump 145 + 75 cc Flow 460 ltr/mn–service pressure : 320bars |
| Controls | By joystick. Boom hoist and telescoping Spreader rotation – side shift |
| Auxiliary | Fan for engine, gearbox and intercooler Hydraulic cooler and filtration Braking axle oil cooler Joystick hydraulic (h version only) |
| | Variable displacement pump 28 cc – 58 ltr/mn Gear pump 40 cc – 82 ltr/mn Gear pump 12 cc – 25 ltr/mn Gear pump 8 cc – 16 ltr/mn |

| CAPACITIES  | |
|--|--|
| Fuel | 700 ltr (+ for SCANIA AdBlue : 38 ltr) |
| Hydraulic oil | 750 ltr |
| Cooling system | 70 ltr |
| Drive axle | 94 ltr |
| Transmission | 70 ltr |
| Engine | 35 ltr |

| CAB  | |
|---|--|
| Dimension | Width=1730, depth=1370, height=1485 (inside dimensions, mm) |
| Sound level | 70 dba doors shut (EN 12053) |
| Air conditioning | Included in standard |

| MAINTENANCE  | |
|---|--|
| Auto diagnosis | Engine, Transmission, (+Hydraulic on hc version) |

| SECURITY  | |
|--|---|
| Anti tipping device | Automatic cut-off system in case of overload |
| Load moment indicator | Standard on “hc” version - Option on “h” version |
| Engine | Protection device (reducing engine revolutions and power output) on set parameters for: oil temperature and pressure, coolant temperature, turbo inlet air temperature. |

CAB



Premium comfort

- Adjustable steering wheel inclination & height + seat with air-cushion
- Spacious air-conditioned and soundproofed cabin (70dBA)
- Every in-cab electrical components are located in one specific compartment for complete protection and ease of maintenance

Clear instrumentation

- A quick scan of the instrument panel clearly reveals vital information at a glance.



Confort Premium

- Volant réglable en hauteur et en inclinaison + siège haut confort à amortisseur pneumatique et réglable toute position
- Cabine climatisée et insonorisée (70dBA)
- Pour une protection totale, les composants électriques sont situés en cabine dans un environnement climatisé et regroupés dans un compartiment spécifique d'accès pratique.

Instrumentation

- Simple et convivial, le tableau de bord offre à l'opérateur une vision claire et immédiate sur les informations essentielles.



Confort Superior

- Volante con ajuste de altura e inclinación + asiento con suspensión neumática = máximo confort
- Cabina con aire acondicionado e insonora (70dBA)
- Para una mayor protección, los componentes eléctricos están situados dentro de la cabina climatizada en un compartimento específico y de fácil acceso.

Contrôles

- Simple y amigable, el tablero de comando ofrece al operador una visión inmediata de los datos esenciales para el usuario.



Conforto Superior

- Volante com ajuste da altura e inclinação + assento com suspensão pneumática = conforto máximo
- Cabina climatizada com isolamento acústica (70dBA)
- Para uma proteção total, os componentes elétricos situam-se dentro da cabine em um compartimento específico e de fácil acesso.

Instrumentos

- Com interface simples e convidativa, o painel de controle oferece ao operador uma visão imediata de todos os dados e informações essenciais.

DASHBOARD TABLAU DE BORD - TABLERO DE MANDOS - PAINEL



- Speed meter
- Diesel gauge
- Tachometer
- Total & Daily hour meter
- Fuel Saving / Ecomode
- Time / Date
- Engine consumption
- Engine / Gearbox default code
- Oil temperature & pressure: engine / gearbox



- Compteur vitesse
- Jauge à gasoil
- Compte-tours
- Compteur horaire totale et journalière
- Réduction de Consommation / Ecomode
- Heure / Date
- Consommation moteur
- Code défaut moteur / boîte de vitesse
- Température & Pression huile moteur / boîte de vitesse



- Velocímetro
- Medidor de combustible
- Tacómetro
- Cronómetro Total y Diario
- Hora / Fecha
- Consumo de combustible
- Códigos de Fallas de motor / transmisión
- Temperatura y Presión aceite de motor / transmisión
- Reduccion de Consume / Ecomode



- Velocímetro
- Indicador de combustível
- Tacômetro
- Cronômetro total e diário
- Hora / Data
- Consumo de combustível
- Códigos de falhas de motor / transmissão
- Temperatura e Pressão do óleo do motor / transmissão
- Redução de Consumo/ Ecomob



HC VERSION SPECIFICITY SPÉCIFICITÉ - ESPECIFICIDAD - ESPECIFICIDADE



- Raised load
- Maximum loading
- Overload ratio
- Length / Angle boom & radius
- Total & Daily container counting device
- Hydraulic oil temperature
- Hydraulic flows and pressures
- Electrical diagnosis system



- Indicateur de charge
- Charge maximum permise
- Ratio de surcharge
- Longueur / Angle de flèche et portée
- Compteur de conteneurs total et journalier
- Température huile hydraulique
- Flux hydrauliques et pressions
- Système de diagnostic électrique



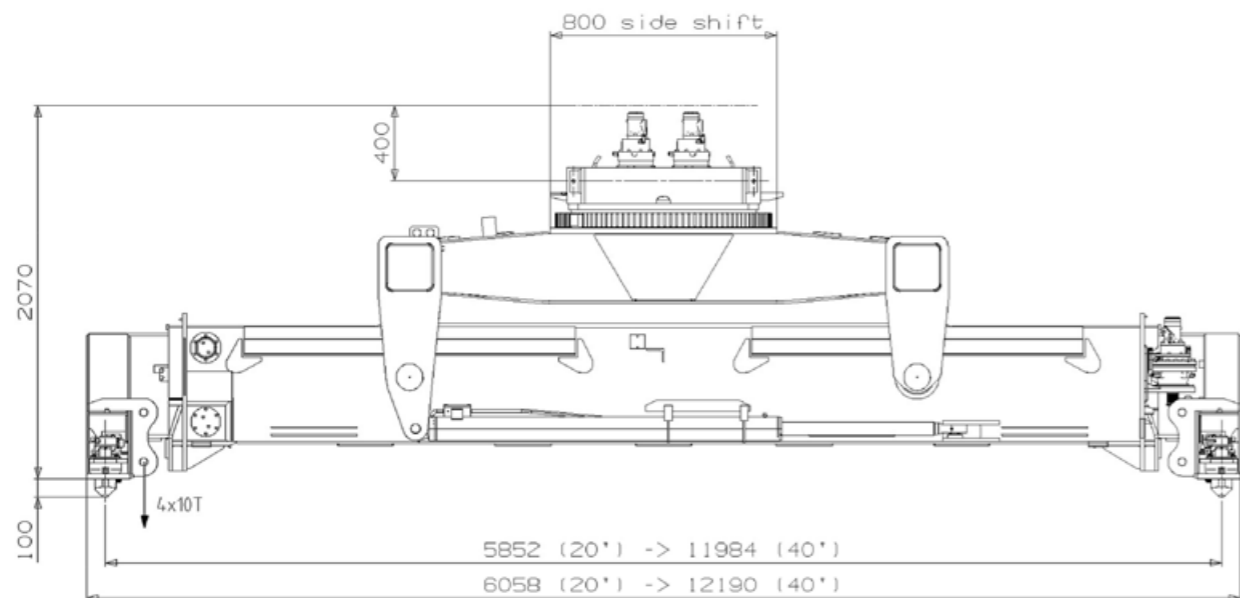
- Indicador de carga
- Capacidad máxima permitida
- Indicador de sobre carga
- Longitud, ángulo de inclinación de la pluma y alcance
- Contador de contenedores Total / Diario
- Temperatura de aceite
- Presión y flujo del sistema hidráulico
- Sistema eléctrico de diagnóstico



- Indicador de carga
- Capacidade máxima permitida
- Indicador de sobrecarga
- Cumprimento, ângulo da lança e alcance
- Contador de contêineres Total / Diário
- Temperatura do óleo
- Pressão e vazão do sistema hidráulico
- Sistema elétrico de diagnóstico

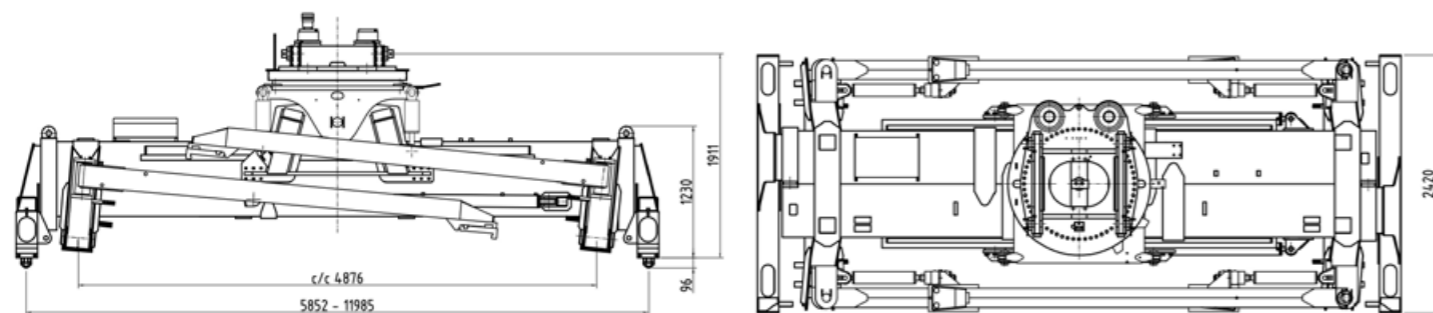
TOP PICK SPREADER

- SIDE SHIFT ON ROLLERS
- 20' TO 40' BEAMS BY SIMULTANEOUS CHAIN TELESCOPING



| | | |
|-----------------------|----------------|-------------|
| Weight | 8 t | - |
| Tilting Angle | ± 4° | - |
| Slewing | + 95° / - 185° | 31 s / 60 s |
| Hydraulic Side Shift | ± 800 mm | 11 s |
| Telescoping 20' - 40' | - | 12 s |
| Locking | - | 1 s |


INTERMODAL SPREADER WITH INTEGRATED POWERED PILE SLOPE (OPTION)





| | | |
|-----------------------|-----------------|-------------|
| Weight | 13,5 t | - |
| Tilting Angle | ± 6° | - |
| Slewing | + 105° / - 185° | 31 s / 60 s |
| Hydraulic Side Shift | ± 800 mm | 11 s |
| Telescoping 20' - 40' | - | 25 / 30 s |
| Lowering | - | 11 s |
| Folding | - | 8 s |


- Piggy Back spreader
 - Fixed or rotary hook 60T
 - Powered pile slope +/- 5° tilt, side to side
 - Second seat
 - Automatic greasing device
 - Low temperature kit
 - Rear, front & twistlock camera
 - Customer colour
 - Adaptation to specific needs – contact us to look for the best solution
- Intermodal spreader avec powered pile slope intégré
 - Crochet 60T rotatif libre / piloté
 - Inclinaison pilotée +/- 5°
 - Deuxième siège
 - Dispositif de graissage automatique
 - Kit basse température
 - Camera avant, arrière & twist lock
 - Couleur client
 - Adaptation à des besoins spécifiques – nous contacter pour trouver des solutions
- Spreader Piggy Back
 - Gancho fijo o rotativo 60T
 - Inclinación transversal del spreader +/- 5°
 - Asiento Auxiliar
 - Dispositivo de engrase automático
 - Kit de temperatura baja
 - Cámara delantera, trasera & twist lock
 - Color personalizada cliente
 - Adaptación a necesidades específicas - póngase en contacto con nosotros para idear la mejor solución
- Spreader Piggy Back
 - Gancho fixo ou rotativo 60T
 - Inclinação transversal do spreader +/- 5°
 - Assento auxiliar
 - Lubrificação centralizada automática
 - Kit baixa temperatura
 - Câmera traseira, dianteira & twist lock
 - Cor personalizada cliente
 - Adaptações as necessidades específicas – Contate-nos para desenvolvermos uma solução

www.terexportsolutions.com

 **Effective Date:** March 2013. Product specifications and prices are subject to change without notice or obligation. The photographs and/or drawings in this document are for illustrative purposes only. Refer to the appropriate Operator's Manual for instructions on the proper use of this equipment. Failure to follow the appropriate Operator's Manual when using our equipment or to otherwise act irresponsibly may result in serious injury or death. The only warranty applicable to our equipment is the standard written warranty applicable to the particular product and sale and Terex makes no other warranty, express or implied. Products and services listed may be trademarks, service marks or trade-names of Terex Corporation and/or its subsidiaries in the USA and other countries. All rights are reserved. Terex® is a registered trademark of Terex Corporation in the USA and many other countries. Copyright 2013 Terex Corporation.

 **Date effective:** Mars 2013. Les spécifications et prix des produits peuvent faire l'objet de modifications sans avis préalable. Les photographies et/ou dessins présentées dans ce document servent uniquement à des fins d'illustration. Veuillez vous référer au manuel d'utilisateur approprié pour les instructions relatives à l'utilisation correcte de cet équipement. Le non-respect du manuel d'utilisateur correspondant lors de l'utilisation de notre équipement ou une utilisation non réglementaire de la machine risquent de provoquer de graves blessures, voire la mort. La seule garantie applicable à nos équipements est la garantie écrite standard applicable au produit et à la vente spécifiques. Terex ne délivre aucune autre garantie, expresse ou implicite. Les produits et les services mentionnés peuvent être des marques, des marques de service ou des appellations commerciales de Terex Corporation et/ou de ses filiales aux Etats-Unis et dans d'autres pays. Tous droits réservés. Copyright Terex Corporation 2013.

 **Vigencia:** Desde Marzo 2013. Terex se reserva el derecho de modificación de especificaciones técnicas y/o precios sin necesidad de aviso previo. Tanto las fotografías como los diagramas contenidos en este documento tienen única y exclusivamente carácter ilustrativo. Para el uso correcto de la maquinaria es necesario seguir las instrucciones contenidas en su respectivo Manual del Operador. El incumplimiento de las instrucciones establecidas en el Manual del Operador mientras se usa nuestra maquinaria, o cualquier otro acto de irresponsabilidad, puede causar graves daños o incluso la muerte. La única garantía aplicable a nuestros equipos es la garantía escrita estándar aplicable particularmente a cada producto y a su venta, estando Terex exonerada de cualquier otro tipo de garantía explícita o implícita. Los productos y servicios expuestos pueden ser marca registrada, marcas de servicio o marcas comerciales de Terex Corporation y/o sus sociedades afiliadas, tanto de Estados Unidos como de otros países, y todos los derechos son reservados. Terex® es una marca registrada de Terex Corporation en Estados Unidos y en muchos otros países. Copyright 2013 Terex Corporation

 **Data Efetiva:** Marzo 2013. Especificações de produtos e preços, estão sujeitos a alterações sem aviso prévio ou obrigação. As fotografias e / ou desenhos neste documento, são para ilustração somente. A falha em seguir o Manual do Operador, quando adequado, usando o nosso equipamento ou qualquer outro ato irresponsável pode resultar em ferimentos graves ou morte. A garantia que se aplica aos nossos equipamentos é a garantia escrita padrão aplicável ao produto em particular e venda terex e não faz nenhuma outra garantia, expressa ou implícita. Produtos e serviços mencionados podem ser marcas registradas, marcas de serviço ou nomes comerciais da Terex Corporation e / ou suas subsidiárias nos E.U.A. e outros países. Todos os direitos reservados. Terex® é uma marca registrada da Terex Corporation nos E.U.A. e muitos outros países. Copyright 2013 Terex Corporation.

Terex Cranes France S.A.S
 Z.I de la Saule – B.P. 106
 F-71304 Montceau-les-Mines Cedex, France
 Phone: +33 3 85 67 38 08
 Fax: +33 3 85 67 39 35
tpsfrance@terex.com

Terex Port Solutions
 Gottwald Port Technology GmbH
 PO Box 18 03 43, 40570 Düsseldorf, Germany
 Phone: +49 (0) 211 7102-0
 Fax: +49 (0) 211 7102-3651
tps.info@terex.com